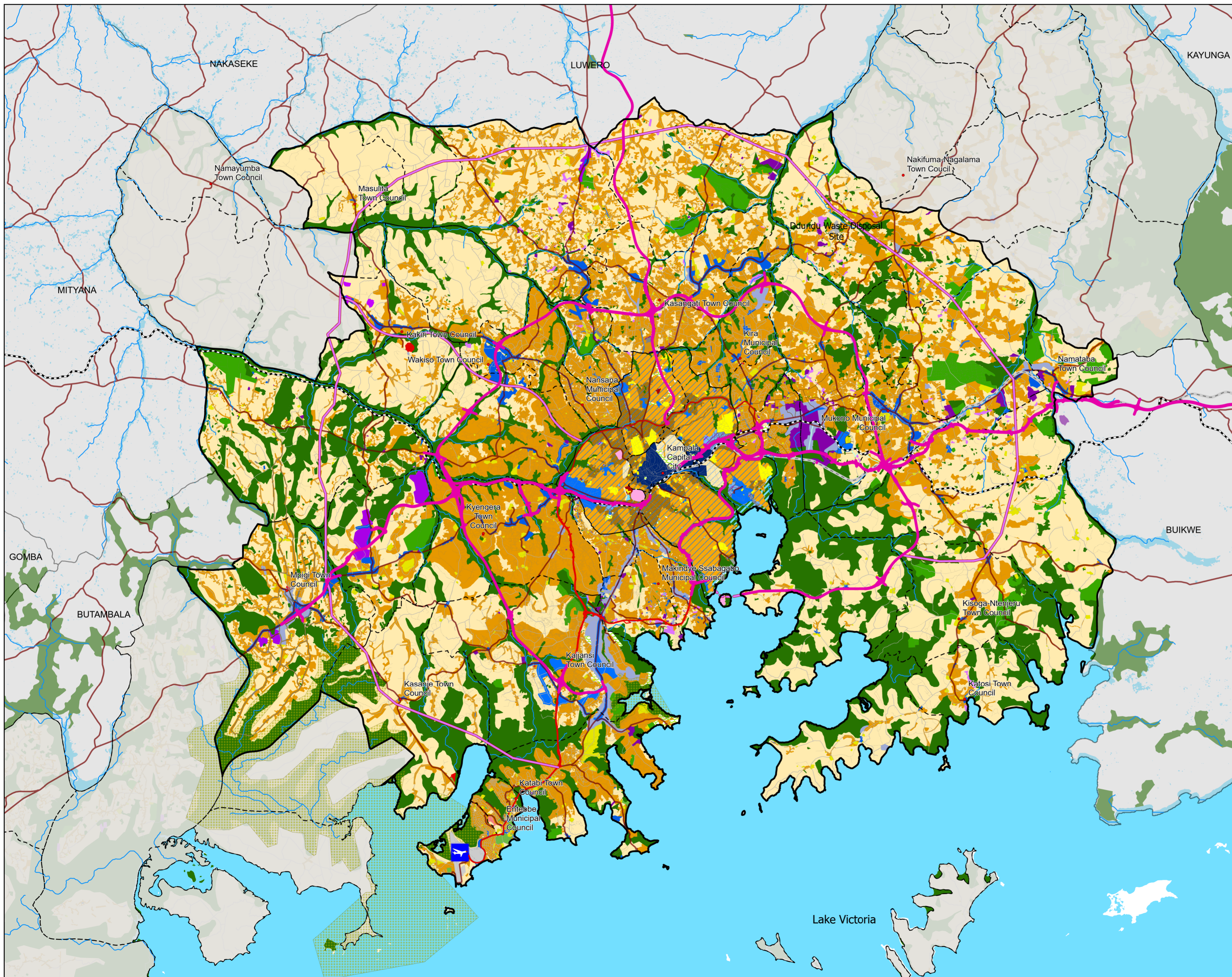
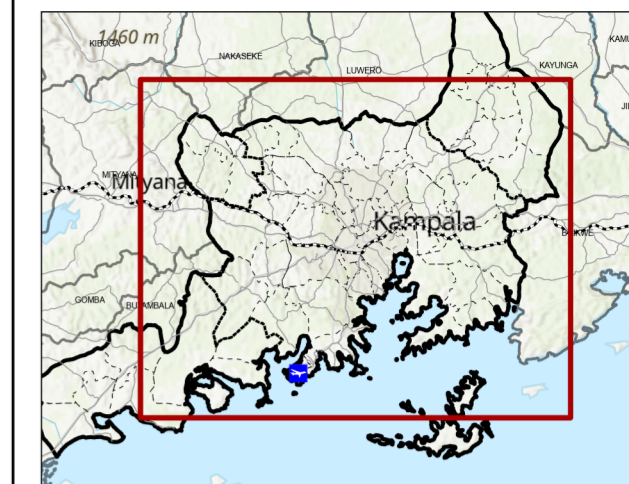


DRAFT GENERAL LAND USE PLAN FOR GKUGA (2050)



Legend

- Entebbe Airport
- Rivers
- Railway Network**
 - Railway Line
 - SGR Alignment
- Road Network**
 - Existing Expressways
 - New Expressways
 - National Road
 - District Roads
 - District Roads (for Upgrade)
 - Proposed Secondary Road
- Protected Areas**
 - Ramsar Sites
 - Environmental
- Landuse Category**
- Landuse Category**
- Outside KCC**
 - Industrial Areas
 - Agriculture
 - Existing Civic
 - Commercial
 - Commercial Agriculture
 - Extractive/Quarry
 - Infrastructure and Utilities
 - Existing Institutional
 - Mixed use
 - Residential Areas
 - New Residential Areas
 - Water Bodies
- Within KCC**
 - CBD
 - Commercial Zone
 - Institutional
 - Mixed Use (Commercial and Industrial)
 - Mixed Use - High Density (Comm and Residential)
 - Mixed Use - Medium Density (Comm and Residential)
 - Mixed Use - Low Density (Comm and Residential)
 - Historic, Traditional and Cultural Zones
 - Protected Water Front Zone
 - Tourism and Recreation

Project:

The Project for **I**ntegrated **U**rban **D**evelopment
Master **P**lan for Kampala Special Planning Area
 (GKMA-IUDMP)

Japan International Cooperation Agency (JICA)
 Oriental Consultants Global Co., Ltd
 Yachiyo Engineering Co., Ltd.
 PACET Corporation
 PASCO Corporation

