

BOUNDARY OPENING:

BUTALEJA/ BUDAKA

By

Ministry of Lands, Housing & Urban Development

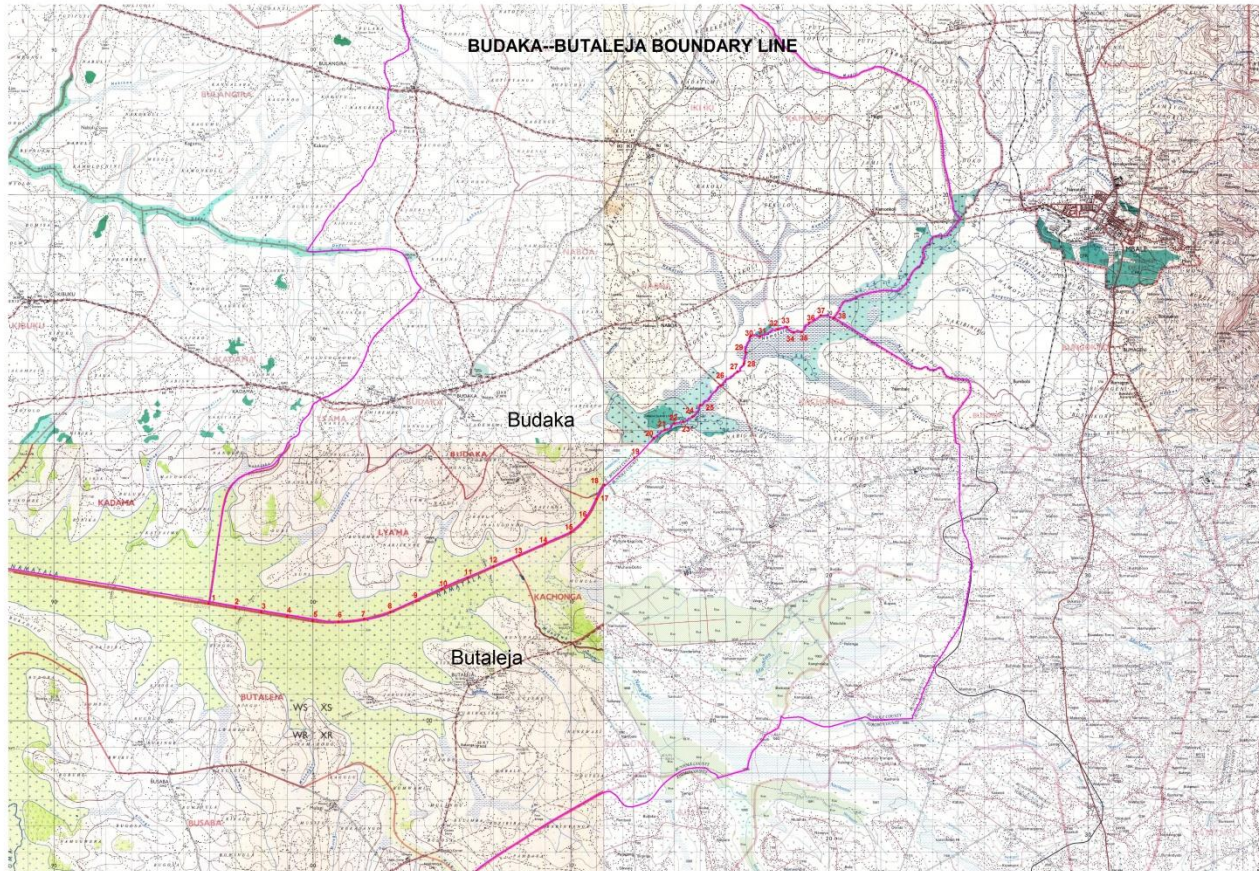
9th February 2017

Mt Elgon Hotel, Mbale

DATA SOURCE

- Constitution of Uganda (1962)
- Archived administrative maps (1962)

THE BOUNDARY



EMPLACED PILLARS



GNSS OBSERVATIONS



PRODUCTS

- Emplaced pillars (mere witnesses)
- Precise coordinates per Pillar (eternal)
- Maps
- Boundary opening report

CLASSICAL RIVER BLOCKAGE



DIVERTED RIVER FLOW



WAY FORWARD

The meeting agreed that:

- The final comprehensive demarcation report on the Budaka - Butaleja boundary be completed by the Survey team from the Ministry and handed over to the Political and technical leaders of the two districts as soon as possible (on Thursday 16th February 2017);
- The petition from the Hon MP of Bunyole East be disregarded because it does not give objective information that is of a survey nature to be able to compare it with the Demarcation report from the Ministry Surveyors;
- The surveyors take the Political and technical leaders for a field visit to show the actual boundary markstones emplaced between the 41 Km stretch between the two districts (on Thursday 16th February 2017);
- Use the opportunity to plant boundary trees as markers along side the district boundary to reinforce the pillars emplaced by the Survey team;
- After boundary demarcation, there is need to manage the wetland resource use following the NEMA law and regulations. Sensitization on proper land use should also be continuously done to educate the local population;
- In the interest of moving as a team, the Political Leadership of the Ministry should organize a meeting with MPs from the two districts that were not present, and update them on the same.